

Funder Information

Click on the name of a funder to learn more about them such as links to their website, funding interests and restrictions, application procedures and deadlines, and more.

User Support

Visit the Grant Connect Help Centre for assistance with using Grant Connect.

**Note: The Pipeline option is not available to the in-library only version of Grant Connect.*



View the recorded webinar:

How to Identify and Qualify Funders
youtu.be/xlqyllC43gc

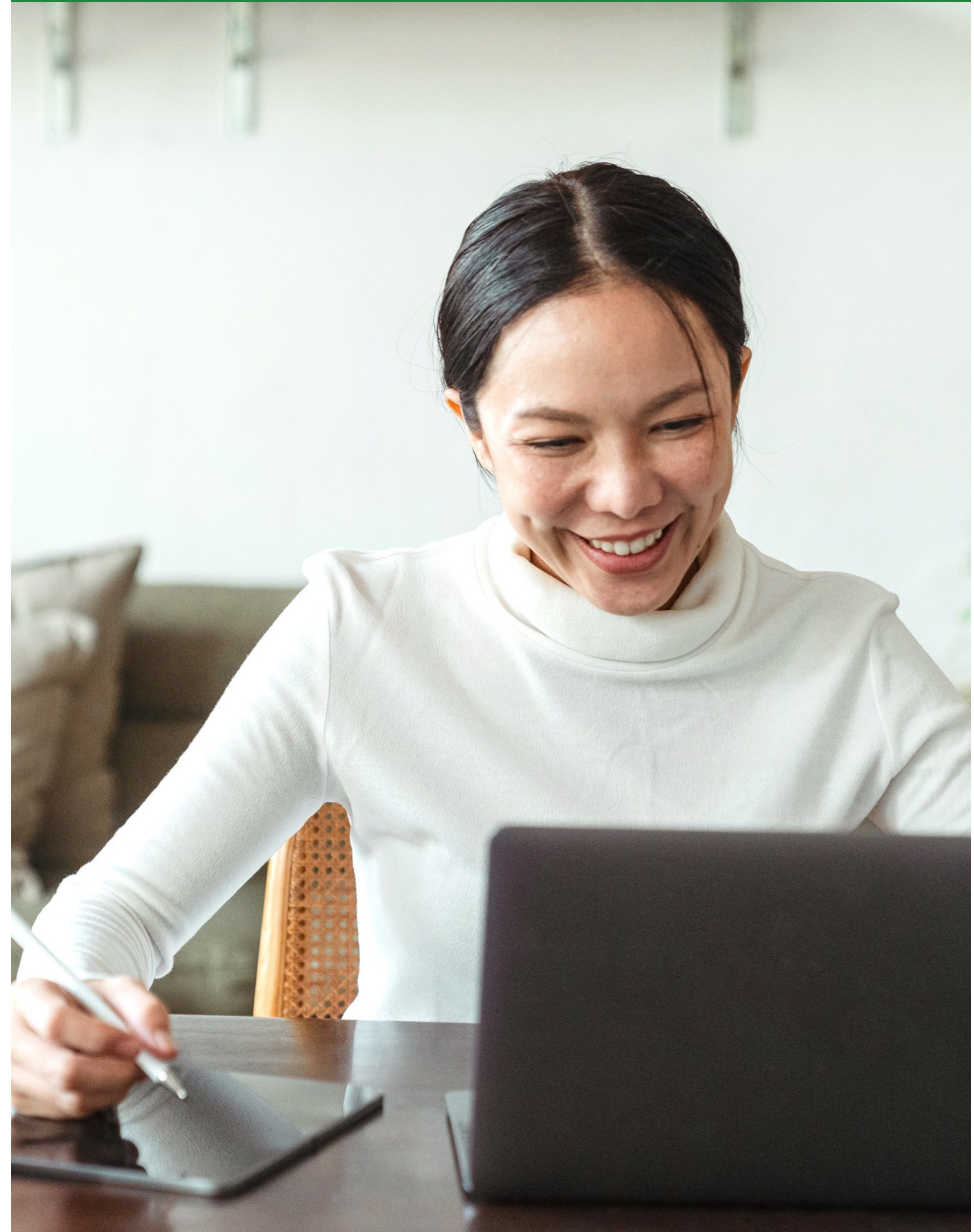


eResources & Digital Content | www.marigold.ab.ca/eresources

March 2021

FUND SEEKING

with Grant Connect



What is Grant Connect?

Grant Connect is an online database with detailed, searchable information about thousands of funders. Available *within the library only*, Grant Connect makes it easy for nonprofit organizations to find funding opportunities.

How do I access Grant Connect?

1. Visit your local library. Use a public access computer or your own device on the library's WiFi.
2. Visit your library's website and look for the eResources menu link, or visit marigold.ab.ca/eResources.
3. From the alphabetical list, locate the link to Grant Connect.

Get started with Grant Connect

There are several ways you can start your search:
Search for a specific foundation, cause, or geographic area in the global search bar at the top of the page.

1. Select a cause from the middle dropdown menu at the top of the page and select the search icon to the right.
2. Select a province or region from the dropdown menu to the right and select the search icon.
3. Select a cause or region tag from the funder profile page.

Funder Search

Once you've started your search, you can narrow down your prospects using the cause, population served, region, type of support, category, and headquarters filters to the left of the search results. You can also filter by language, open to funding requests, and median gift size above the results.

The screenshot shows the 'Funder Search' interface. On the left, there is a 'Filters' section with a 'RESET' button. The filters include: Cause (Health (2003), Social Services (1491), Religion (1194), Education (1062), Arts and culture (1033)), Language (All), and Open to Requests (All). The main search area shows 'Showing all results' and a 'Featured Results' section.

Finally, you can sort your results by name, match, median gift, deadline, and annual revenue using the Sort by menu at the top right.

The screenshot shows the 'Sort By' menu and the 'Median Gift' filter. The 'Sort By' menu is highlighted with a yellow box and shows 'Match' selected. The 'Median Gift' filter shows '\$0' to '\$ Unlimited'.